

# 19" Adjustable Glass Door Double Rack Cabinet for Wall Mounting

linkedpro  
byepcom®

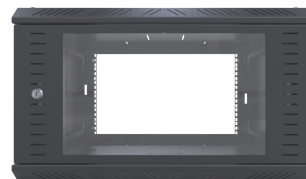
## GFP Series

### Main Features:

- Impact resistant safety glass window.
- Easy wall mounting.
- Removable sides for handling, design modification or installation of the equipment.
- Ability to adjust or remove the rack mounts.
- Security door plate.
- Removable door and the ability of modifying the opening direction.
- Welded body ensuring the design rigidity.

### Main Applications:

- Security monitoring stations for recorders and switches
- Radio communication equipments such as repeaters and power supplies.
- Control center for air-transmitted data.
- Administering high performance copper and fiber optics cables with added security.



### Product Specifications

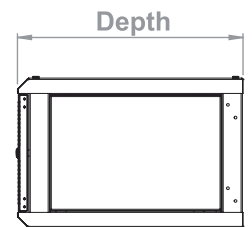
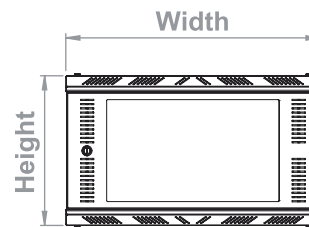
Material	Rolled Steel Sheet
Gauge	Body 18, Doors 22
Color	Semi-matte Black
Application	Indoor
Paint	Polyester-based powder coating
Standard	EIA 310-D

### Dimensions

Model	SR1906GFP	SR1909GFP	SR1912GFP	SR1916GFP	SR1924GFP
Width	23.6"				
Height	13.9"	19.2"	24.4"	29.6"	45.5"
Depth	21"				
Weight	35.3 lb	39.7 lb	46.3 lb	55.2 lb	70.55 lb
Rack units	6 U	9 U	12 U	16 U	24 U

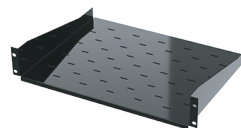
Front View

Side View



Working Depth: 18.5" (470 mm)

### Compatible Accessories (not included)



4-piece kit of expansion bolts  
3/8"x3" with 1/2" anchors

Grounding connecting bar  
for 19" rack

Support tray for the  
19" rack

8-Outlet horizontal power  
strip for 19" racks

110VAC Fan for cabinet wall  
with a plug and 2 power  
sockets

BARREN-ANCLA

TG-BUE-RACK

SCH19X1U

HTCM1U

LP-VENT-01