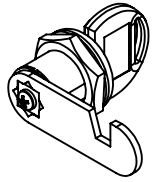


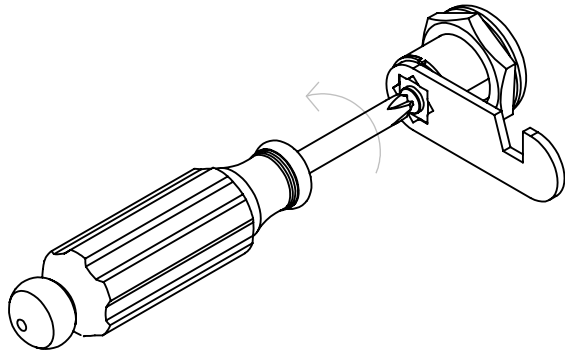
METAL SHEET ORIENTATION MANUAL

INSTRUCTIONS:



Perform the following steps only in case the key could not be removed in the closed position.

1. Remove the front screw using a screwdriver without resting the assembly on a flat surface.



3. Keep the assembly on a flat surface, turn the padlock as shown in Fig. 2 so that the notch would be inverted with respect to the reference point and place it back on the assembly.

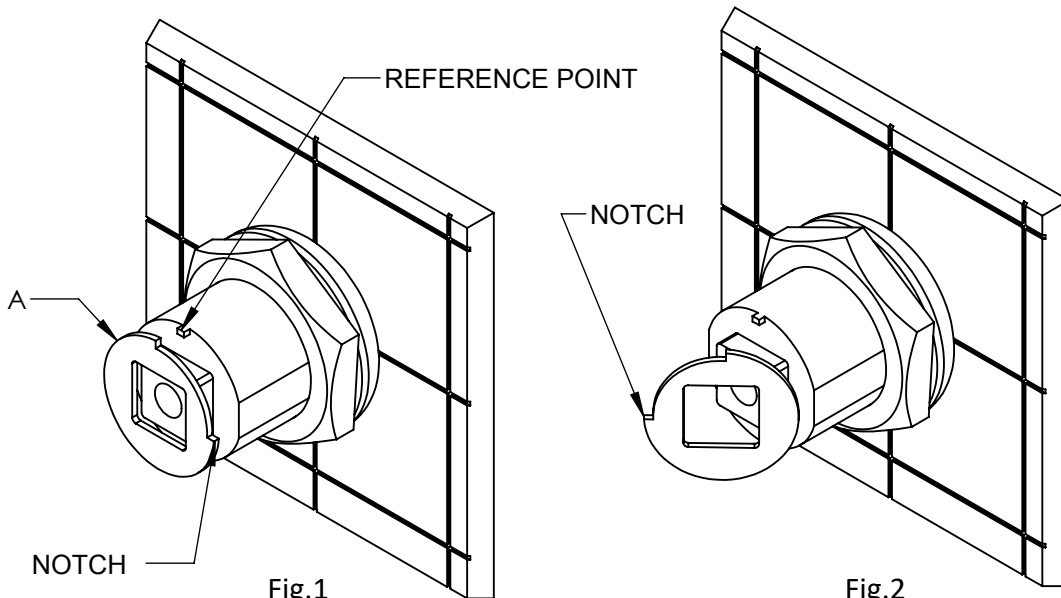
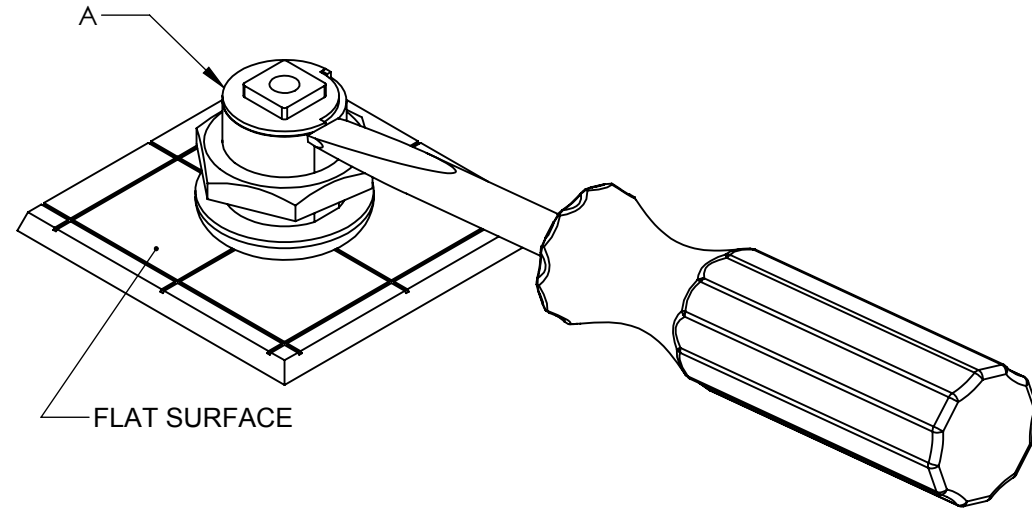


Fig.1
BEFORE

Fig.2
AFTER

2. Place the assembly on a flat surface in order to make sure that the components don't fall apart. Using a flat screwdriver, take the padlock (A) out of the assembly as shown in the figure below.



4. Place back the rotated palette (B) and the screw. Using a screwdriver, tighten the assembly as shown below.

